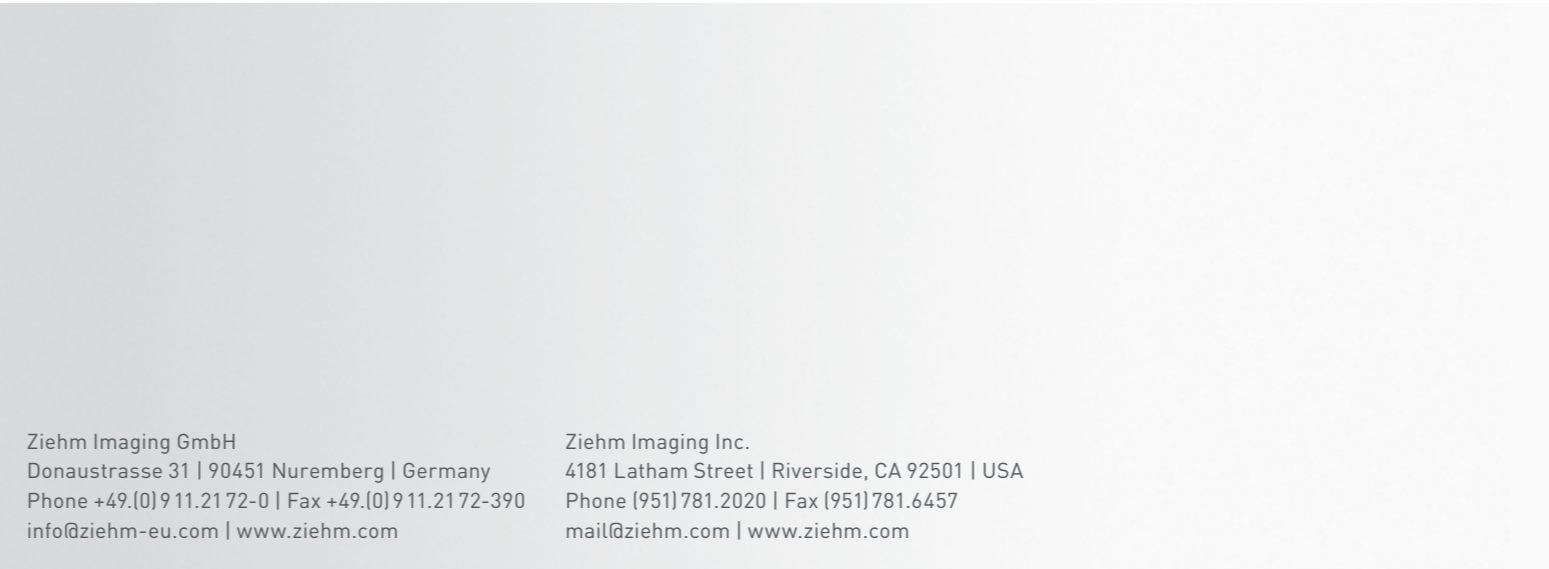


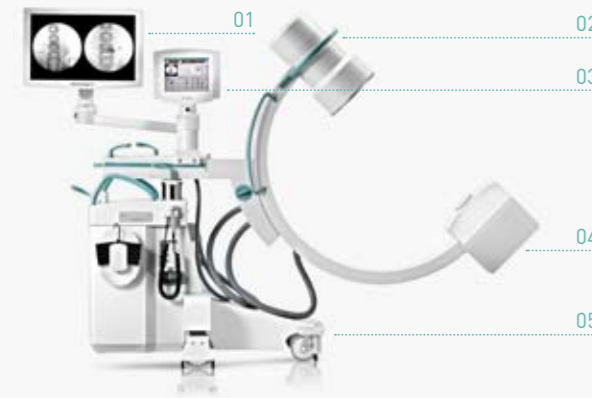
Big things come in small packages. Since the ORs in hospitals and surgery centers are becoming smaller and more equipment is being used, the demand for imaging units with smaller footprints is growing. Ziehm Solo is one of the most compact and versatile C-arms for crowded treatment scenarios. Equipped with state-of-the-art imaging technology, this C-arm delivers great performance for pain management, orthopedic and other applications. All this at a competitive price.



Ziehm Solo
Superb imaging meets versatile design

Ziehm Imaging GmbH
Donaustrasse 31 | 90451 Nuremberg | Germany
Phone +49.(0)9 11.21 72-0 | Fax +49.(0)9 11.21 72-390
info@ziehm-eu.com | www.ziehm.com

Ziehm Imaging Inc.
4181 Latham Street | Riverside, CA 92501 | USA
Phone (951) 781.2020 | Fax (951) 781.6457
mail@ziehm.com | www.ziehm.com



Single component platform for simple maneuverability

- 01 Monitor mounted on mobile stand
- 02 1 k x 1 k imaging chain for high resolution
- 03 Intuitive touchscreen user interface
- 04 Pulsed 2kW monoblock generator for optimal image quality
- 05 Light-weight design with compact footprint

Ziehm Solo at a glance

Compact Design

Its compact design makes Ziehm Solo easy to handle even in the smallest ORs. All functions required for image acquisition, processing and archiving are integrated in the C-arm. All C-arm movements are fully counterbalanced in every position, making the unit extremely comfortable to use.

Superb Image Quality

Ziehm Solo comes with a highly compact monoblock generator for producing short, sharp pulses and crystal-clear images. Ziehm Solo's CCD camera comes

with 1k x 1k resolution and a high dynamic range of more than 4,000 shades of gray for visualizing even the smallest anatomical structures.

Object Detected Dose Control (ODDC)

As an option Ziehm Solo is available with ODDC. This function adapts all settings to the patient's position. It also dynamically adjusts generator output and video levels to patient anatomy by detecting motion and any metallic devices placed within in the region of interest. Both patient and OR staff benefit from superb image quality and minimal dose levels.

Versatility



Ziehm Solo allows flexible connection to almost any external monitors such as ceiling mounted displays.

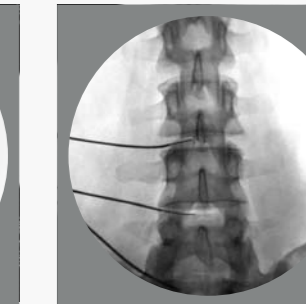


An optional viewing station provides multiple screens with synchronized displays for more flexibility in the OR.

Applications



Orthopedic and Trauma



Pain Management